

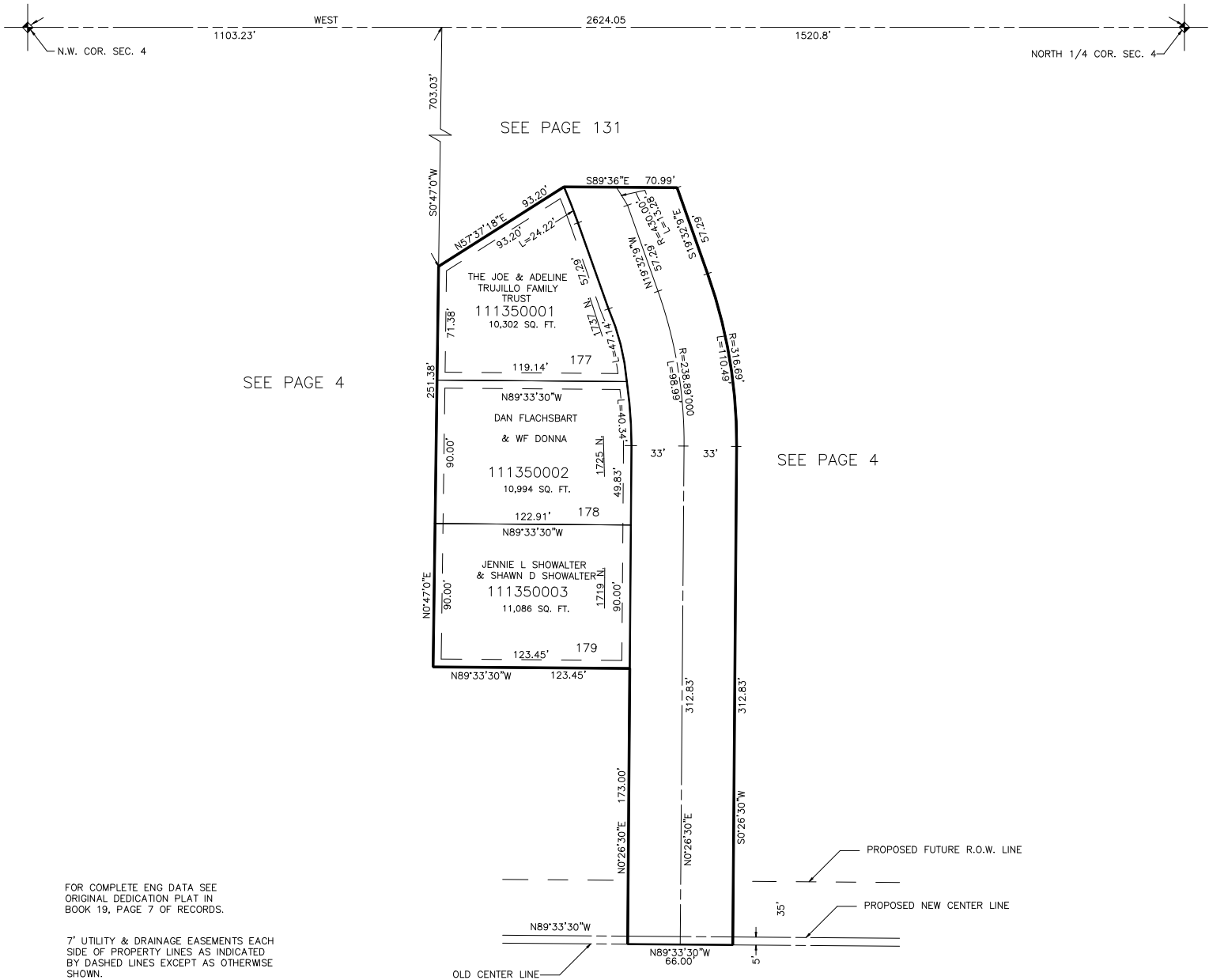
PART OF N.W. 1/4 OF SEC. 4, T.6N., R.1W., S.L.B. & M.
GREEN ACRES ESTATES NO. 6

135

IN NORTH OGDEN CITY

TAXING UNIT: 10

SCALE 1" = 50'



SEE PAGE 4

FOR TAX PURPOSES ONLY

CRR 12-98